



*Rondje REM is een initiatief van
Watersportvereniging Zandvoort*

SAILING INSTRUCTIONS

Rondje REM all kite & wing foiling classes
Organized by Watersportvereniging Zandvoort

July 8th, 2023

location: Zandvoort, Strandafgang Paulus Loot 12

[DP] denotes a rule for which the penalty is at the discretion of the Protest Committee.

[NP] denotes that a breach of this rule will not be grounds for a protest by a boat.

[SP] denotes a rule for which a standard penalty may be applied by the race committee without a hearing.

1. RULES

- 1.1 Apart from this NOR/SI for Kite & Wing Foil, there is another document for the Catamarans.
- 1.2 The Rondje REM will be governed by the rules as defined in the Racing Rules of Sailing' (RRS).
- 1.3 If there is a conflict between languages, the original text will take precedence.

2 CHANGES TO SAILING INSTRUCTIONS

2.1 Any change to the sailing instructions will be posted before 20:00 hr on the evening before the day it will take effect.

3 COMMUNICATIONS WITH COMPETITORS

- 3.1 Notices to competitors will be posted on the official notice board near the flag pole in front of Watersportvereniging Zandvoort.
- 3.2 The race office is located at Watersportvereniging Zandvoort, Boulevard Paulusloot 12, Zandvoort

4 [DP] CODE OF CONDUCT

- 4.1 Competitors and support persons shall comply with reasonable requests from race officials.
- 4.2 Competitors and support persons shall handle any equipment provided by the organising authority with care, and seamanship, following any instructions for its use and without interfering with its functionality.

5 TRACKERS

- 5.1 Trackers will be used for safety and scoring purposes.
- 5.2 The tracking devices will be distributed by the RC near the Regatta Office immediately after the skippers meeting. When the RC issues a tracker to a competitor, they are required to sign the sign out-form acknowledging receiving the tracker.
- 5.3 [SP] It is mandatory to sail with a tracker. If a foiler is sailing without a tracker, that foiler will be disqualified without a hearing by the race committee.
- 5.4 [SP] The tracker needs to be returned, in working order, within 1 hour after the competitor has finished (immediately after its finish) near the Regatta Office. The return requires acknowledgement via a sign in-form. Failing to sign-in shall result in disqualification without a hearing by the race committee. (The RC needs to ensure the safety of an event, missing a tracker means that the foiler is still on the water and, therefore, the Rescue will start a search)
- 5.5 [DP][SP] When a foiler fails to return its tracker, this person will have to reimburse the costs of a tracker to the RC. The amount to be reimbursed is 399 euros.



Rondje REM is een initiatief van
Watersportvereniging Zandvoort

- 5.6 Attaching the tracker to a person: The tracker shall be worn on the body, preferably underneath the wetsuit or vest (not on the board or sail, this will highly increase the risk of losing the tracker).

6 ELIGIBILITY AND ENTRY

- 6.1 The event is open to all boards.
6.2 Foilers may enter the event by registering online at <https://www.rondjerem.nl>
The required fee can be paid on race day between 08:00 and 11:00 at the regatta office of Watersportvereniging Zandvoort.
6.3 Wing Foil Classes will sail as one class.
6.4 Tube kite Foil Classes will sail as one class
6.5 Matras Foil Classes will sail as one class
6.6 Wind foil classes will sail as one class

7 SCHEDULE OF RACES

7.1 Schedule of races

	Date	time
Briefing Rondje REM long distance foil race	Saturday, July 8th	10:45
Warning Signal Rondje REM Long Distance foil race wind foil	Saturday, July 8 th	12:20
Warning Signal Rondje REM long distance foil race mattress	Saturday, July 8th	12:25
Warning Signal Rondje REM long distance foil race tube kite	Saturday, July 8th	12:30
Warning Signal Rondje REM long distance foil race wing	Saturday, July 8th	12,35

8 RACING AREA

- 8.1 see NOR Attachment A

9 COURSES

- 9.1 Rondje REM long distance wind, kite & wing foiling race course see attachment A
9.2 On Race Day the Race Committee will decide how many rounds competitors will race. This may vary per class.

10 Marks at Rondje REM long distance foil race.

- 10.1 Marks 1, 2, 3, 4 and 5 will be orange inflatable marks.
10.2 The starting and finishing line will be between two Rondje Rem beach flags on the beach in front of Watersportvereniging Zandvoort



Rondje REM is een initiatief van
Watersportvereniging Zandvoort

11 START

11.1 Le Mans start: The starting line shall be between two Rondje REM beach flags placed on the beach in the starting area. All foilers shall position themselves in front of the starting line on the beach

Competitors may start when the green flag is down and after the passing of a bike in front of them.

11.2 The following starting procedure for all kite and wing foiling classes replaces RRS 26.

	Time	Sound	Flag
Warning	T - 30 sec	Whistle	Orange flag up
Attention	T - 10 sec	Whistle	Green flag up
Prepare	T- 5 sec	Whistle	Orange flag down
Start	0 sec	Whistle	Green flag down

11.3A foiler who does not start within 15 minutes after it's class starting signal shall be scored Did Not Start without a hearing. This changes RRS A5.1 and A5.2.

12 THE FINISH

12.1 The finishing line will be between two Rondje REM beach flags on the beach in front of the Watersportvereniging Zandvoort.

12.2A foiler finishes when crossing the finish line and putting a hand on the finishing table of the RC

13 SCORING

13.1 All wing and kite foil classes will be scored in the order in which foilers finish.

14 PROTESTS AND REQUESTS FOR REDRESS

14.1 Protest forms are available at the Regatta Office. Protests and request for redress or reopening shall be delivered within the protest time limit. Protesters shall use the start numbers as identification on the protest form.

14.2 The protest time limit is forty-five (45) minutes after the last board has finished the last race of that day. The same protest time limit applies to all protests by the Race Committee and Jury and to requests for redress. This changes RRS 61.3 and 62.2.


14.3 Notices will be posted within 30 minutes of the protest time limit to inform competitors of hearings in which they are parties or named as witnesses. Hearings will be held in the jury room, located near the regatta office, according to the posted schedule. Parties in a hearing are responsible for the presence of their witness(es) at the time of the hearing.

14.4 Notices of protests by the race committee or jury will be posted to inform boats under RRS 61.1(b).

14.5 Start numbers of competitors, disqualified without a hearing, will be posted on the notice board within 30 minutes after the time of the last finisher.

15. Safety signals

15.1 Signals at sea will only be displayed by Race Committee boats.

15.2 Displaying flag 'N'  means that the Rondje REM race has been abandoned. All foilers have to sail to the nearest beach immediately. This changes RRS "Race 15.



*Rondje REM is een initiatief van
Watersportvereniging Zandvoort*

16 [NP][DP] SAFETY REGULATIONS

16.1 While afloat all competitors have to wear:

1. A helmet
2. A wet- or dry suit

16.2 Foilers will receive a lycra with a number. This lycra shall be worn and will be used to identify the competitors. Competitors must ensure that their number is clearly visible (impact vest underneath the lycra, no long hair in front of the number, ect.). After the race the lycra's need to be returned to the regatta office.

16.3 Wearing an impact (safety) jacket with a functional floatation device of at least CE50 Newtons standard, or equivalent is advised.

16.4 Wearing an approved personal emergency signal, to be carried on the body is advised.

16.5 [DP] A board that retires from a race shall notify the race committee at the first reasonable opportunity.

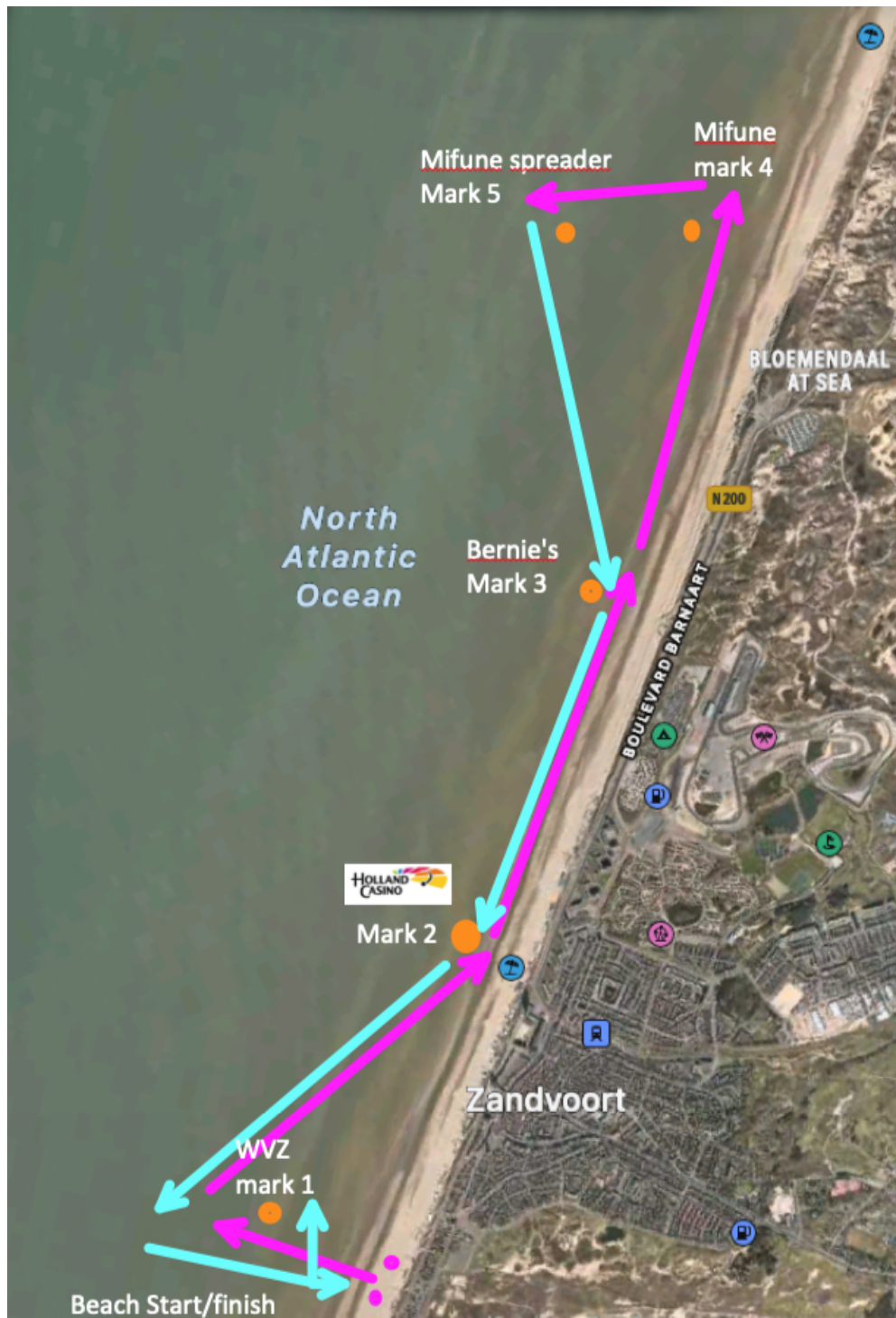
16.6 Foilers in distress: A board in distress, must ask for help, if necessary. However, committees or rescue boats take responsibility and assist if a board is unable to race again within 10 minutes, or they will help earlier for safety reasons. If a committee or rescue boats decides to assist a board in distress, this will be seen as help under RRS 41(a).

16.4 Check-out and check-in: is on the retrieval of the tracker.



Rondje REM is een initiatief van
Watersportvereniging Zandvoort

Attachment A: race course (or [check the video](#))



Attachment B: the venue map

