



Rondje REM is een initiatief van
Watersportvereniging Zandvoort

6 TRACKERS

- 6.1 During the Rondje REM long-distance race on Saturday, trackers will be used for safety purposes.
- 6.2 The RC will distribute the tracking devices near the Regatta Office immediately after the skippers meeting. When the RC issues a tracker to competitors, they must fill in the sign out-form acknowledging receiving the tracker.
- 6.3 [SP] It is mandatory to sail with a tracker. If a competitor is sailing without a tracker, that competitor will be disqualified without a hearing by the race committee.
- 6.4 [SP] The tracker needs to be returned, in working order, within 1 hour after the competitor has finished (immediately after its finish), near the Regatta Office. The return requires acknowledgement via a sign in-form. Failing to sign-in shall result in disqualification without a hearing by the race committee. (The RC needs to ensure the safety of an event, missing a tracker means that the competitors are still on the water, and therefore, the Rescue will start a search)
- 6.5 [DP][SP] When a competitor fails to return their tracker, this person will have to reimburse the costs of a tracker to the RC. The amount to be reimbursed is 399 euros.
- 6.6 Attaching the tracker to a person: The tracker shall be worn on the body, preferably underneath the wetsuit or vest (not on the board or sail, which will increase the risk of losing the tracker).

7 SCHEDULE OF RACES

- 7.1 Schedule of races
 - Saturday, August 29 – Rondje Rem long-distance race
 - Sunday, August 30 – Local Club competition
- 7.2

	Date	time
Briefing Rondje REM long distance race	Saturday, August 29	10:15
Warning signal Rondje REM long distance race	Saturday, August 29	11:55
First warning signal windward-leeward courses	Sunday, August 29	10:55

- 7.3 To alert boats that a race or sequence of races will begin soon, the orange starting line flag will be displayed with one sound signal at least five minutes before a warning signal is made.
- 7.4 On the last scheduled day of racing, no warning signal will be made after 15:30 hr.

8 CLASS FLAGS

- 8.1 The Class flags are:

Course/class		
All classes Rondje REM long distance race	RR flag	
Classes TR </= 107	Flag Q	
Classes TR > 107	Flag D	



*Rondje REM is een initiatief van
Watersportvereniging Zandvoort*

9 RACING AREA

9.1 see attachment A

10 COURSES

- 10.1 Rondje REM long distance race course see attachment A
- 10.2 Rondje REM long distance race can be shortened at the rounding mark in front of Noordwijk (Mark 3) or the rounding mark in front of Katwijk (Mark 4). This will be signalled by hoisting Flag T on an RC vessel near the mark. The shortened course will be rounding the mark in the appropriate direction and then returning in the direction of Zandvoort.
- 10.3 If the course is shortened at Katwijk, marks of the course at Noordwijk (Mark 3) and Langevelderslag (Mark 2) must be kept to port.
- 10.4 If the course is shortened at Noordwijk, the mark of the course at Langevelderslag (Mark 2) has to be kept to port.
- 10.5 Windward-leeward, the number of the course to be sailed will be displayed on the starting vessel. This is the course based on the classes TR < 107. the course for the classes TR ≥ 107 is the course minus one lap.
- 10.6 Windward – leeward: The course diagram in attachment B shows the courses, the course direction and course number, the order in which marks are to be passed, and the side on which each mark is to be left.
- 10.7 Windward – leeward: boats in their class failing to finish within thirty (30) minutes after the first boat sails the course and finishes will be scored. Did Not Finish. This changes RRS 35, A4 and A5.
The course length and the angles between the legs may be adjusted for wind conditions.

11 Marks at Rondje REM long-distance race.

- 11.1 All marks will be orange inflatable marks.
- 11.2 The starting and finishing marks will be an orange cylindrical buoy and the flag on the starting/finishing vessel.

12 THE START

- 12.1 On Saturday, the Z flag will be used, meaning that between the 1-minute signal and the starting signal, no part of a boat or its crew shall be in the triangle area that is formed by the ends of the starting line and the buoy in front of Langevelderslag. RRS 30.2 is changed so that the scoring penalty is 25%, and any rights to the Line Honors are revoked. This changes RRS 63.1.
- 12.2 The starting line is between a staff displaying an orange flag on the starting vessel at the starboard end and the course side of the port-end starting mark.
- 12.3 A boat that does not start within 10 minutes after her starting signal will be scored Did Not Start without a hearing. This changes RRS A5.1 and A5.2.

13 THE FINISH

- 13.1 The finishing line will be between a staff displaying a blue flag on the finishing vessel at the starboard end and the finishing mark at the port end. At the Rondje REM Long-distance race, the finish will be in front of Watersportvereniging Zandvoort.



*Rondje REM is een initiatief van
Watersportvereniging Zandvoort*

14 SCORING

- 14.1 2 races must be completed to constitute the series.
- 14.2 Rondje REM long-distance race cannot be discarded.
- 14.3 When fewer than four(4) races have been completed, a boat's series score will be the total of her race scores. When four(4) or more races have been completed, a boat's series score will be the total of her race scores, excluding her worst score of the windward-leeward races.

15 PROTESTS AND REQUESTS FOR REDRESS

- 15.1 Protest forms are available at the Regatta Office. Protests and requests for redress or reopening shall be delivered within the protest time limit. Protesters shall use the start numbers as identification on the protest form.
- 15.2 The protest time limit is forty-five (45) minutes after the last boat has finished the last race of that day. The same protest time limit applies to all protests by the Race Committee and Jury and to requests for redress. This changes RRS 61.3 and 62.2.
- 15.3 Notices will be posted within 30 minutes of the protest time limit to inform competitors of hearings in which they are parties or named as witnesses. According to the posted schedule, hearings will be held in the jury room near the Regatta office. Parties in a hearing are responsible for the presence of their witness(es) at the time of the hearing.
- 15.4 Notices of protests by the race committee or jury will be posted to inform boats under RRS 61.1(b).


16 REPLACEMENTS OF CREW OR EQUIPMENT

- 16.1 Substitution of competitors will not be allowed without the prior written approval of the race committee. Replacement of the responsible person is not allowed.

17 EQUIPMENT CHECKS AND MEASUREMENT CHECKS

- 17.1A Boat or equipment may be inspected at any time for compliance with the class rules, notice of race and sailing instructions.
- 17.2[DP] When instructed by a race official on the water, a boat shall proceed to a designated area for inspection.

18 [NP] [DP] SAFETY REGULATIONS

- 18.1 The race committee will protest a boat for violating these safety regulations.
- 18.2 At registration, every boat will receive a pink RONDJE REM sticker to be placed on the front beam of their boat. Each sticker has the start number of that boat. Competitors need to add a mobile number on the sticker on which the rescue teams can reach them.
- 18.3 Competitors shall wear personal flotation devices at all times while afloat, except briefly while changing or adjusting clothing or personal equipment. Flag Y  will not be displayed, RRS 40.1 applies at all times when afloat. This changes Part 4 preamble and RRS 40.1.
- 18.4 Safety regulations will apply as written in the Notice of Race (NOR - Veiligheid voor alles). All the mentioned safety requirements shall not be removed after finishing and arrival on the beach until the protest time limit has expired.



*Rondje REM is een initiatief van
Watersportvereniging Zandvoort*

- 18.5 Competitors shall wear a dry suit or wetsuit at all times while afloat, except briefly while changing or adjusting clothing or personal equipment.
- 18.6 All competitors sailing on a “full foiling” catamaran shall wear a helmet at all times while afloat and wear an impact (safety) jacket with a functional floatation device of at least CE50 Newtons standard or equivalent.
- 18.7 Boats not leaving the beach for a scheduled race shall promptly notify the Race Office.
- 18.8 Boats in distress: A boat, capsized or otherwise in distress, has to ask for help if necessary. However, committees or rescue boats will take responsibility and assist if a boat cannot race again within 10 minutes, or they will help earlier for safety reasons. If a committee or rescue boat decides to assist a boat, capsized or otherwise in distress, such a boat will not be disqualified. This changes RRS 63.1.
- 18.9 [SP] Boats shall sign out before going afloat and sign in immediately, but at the latest within the protest time limit, upon returning to shore each day in the Regatta Office at the beach. Boats failing to comply will be penalised without a hearing. The penalty for such breach (sign out and sign in) will be 20% for all races of the day, calculated in accordance with RRS 44.3(c), scoring penalty. The penalty will be applied without a hearing.
- 18.10 [SP] A boat that retires from the race shall notify the Race Committee at sea if possible and shall, in all cases, inform the Regatta Office as soon as possible, but ultimately within the protest time limit.
- 18.11 Boats not racing shall remain clear of racing boats and official boats.

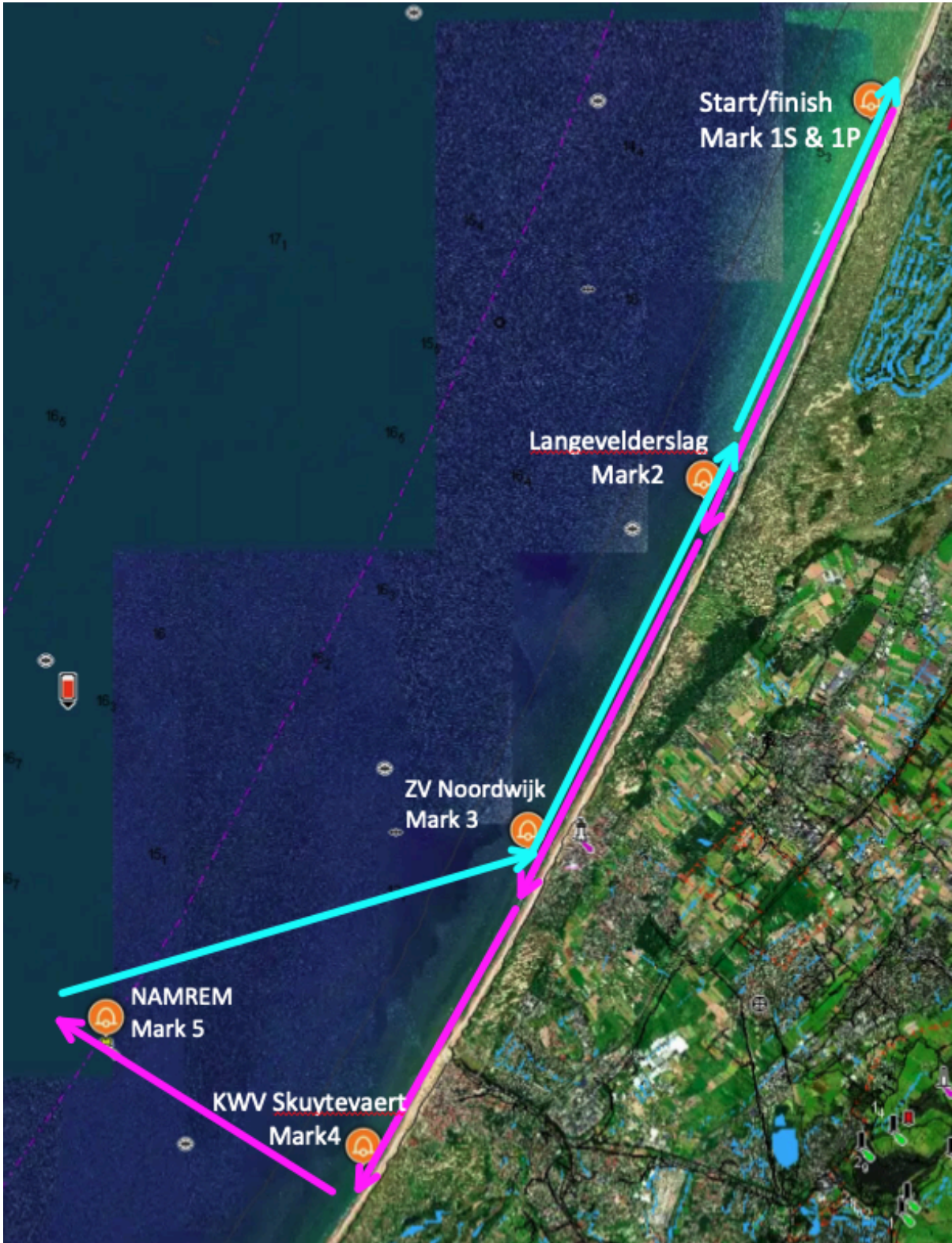
19 TRASH DISPOSAL

- 19.1 [DP] Trash may be placed aboard official and support boats.



Rondje REM is een initiatief van Watersportvereniging Zandvoort

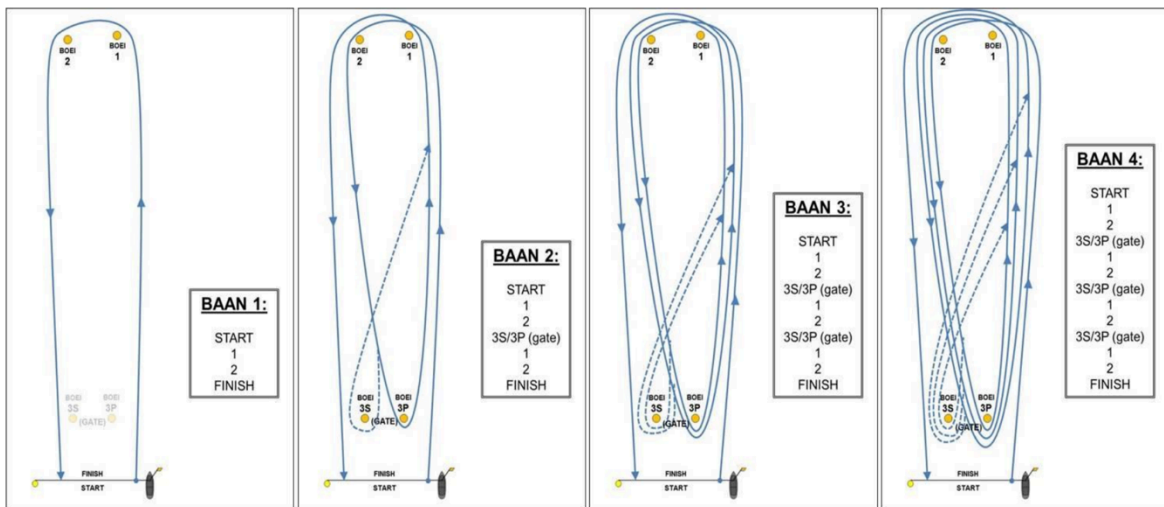
ATTACHMENT A Rondje REM (long distance race):





Rondje REM is een initiatief van Watersportvereniging Zandvoort

Attachment B - Windward leeward course



The number of the course (baan) to be sailed will be displayed on the RC signal vessel.

Attachment C: layout of the beach

